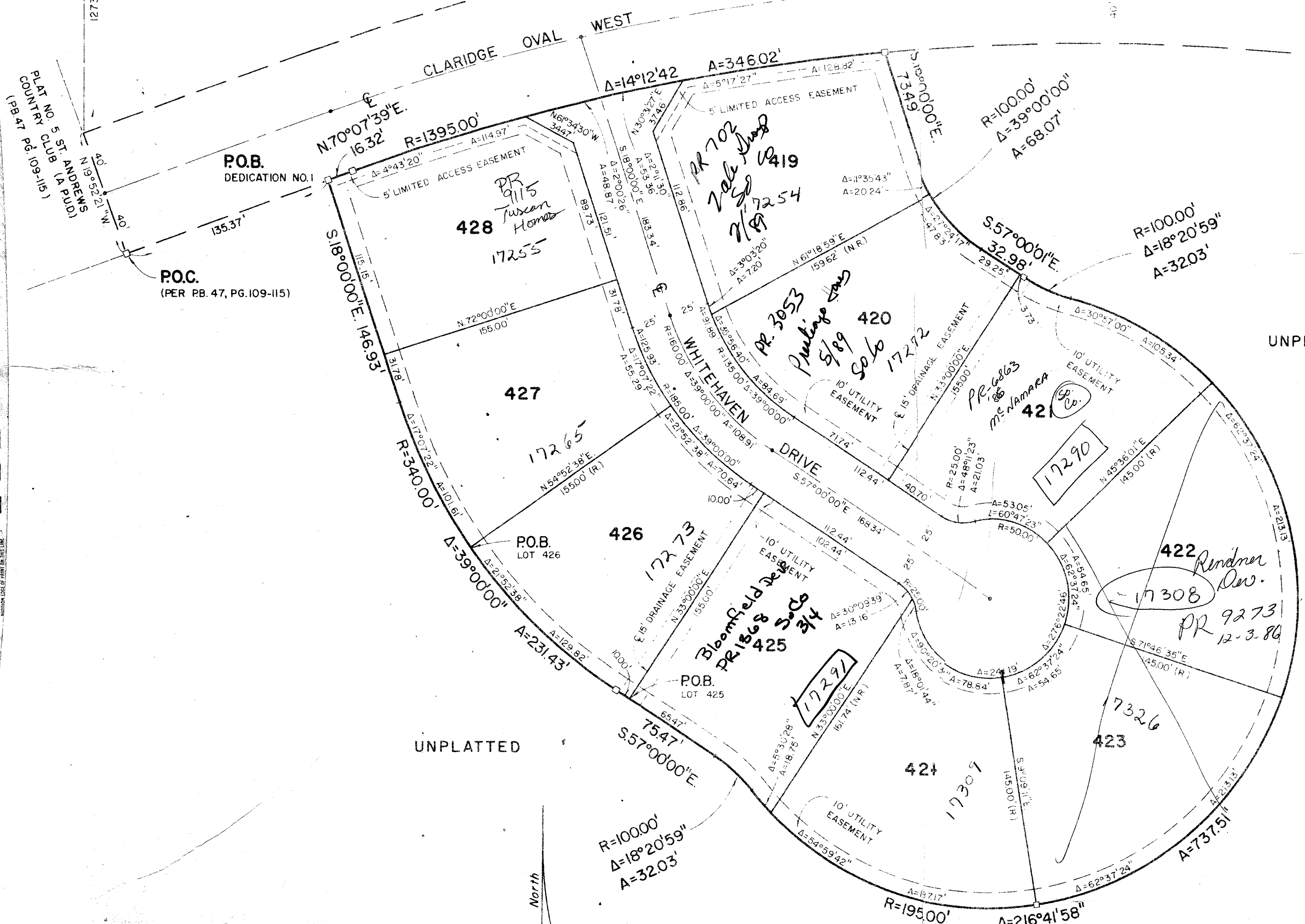


DRAWING NUMBER
53/175

175

N. LINE SEC. 33, TWP. 46 SOUTH, RANGE 42 EAST
507.19'
N.88°58'35"E.
NORTH 1/4 CORNER

PLAT NO. 7 ST. ANDREWS
COUNTRY CLUB (A P.U.D.)
(P.B. 51 - PGS. 157-158)



UNPLATTED

UNPLATTED

0305-008

53/175

FILED BY
DATE FEB 1986

PLAT No. 6
ST. ANDREWS COUNTRY CLUB
(A P.U.D.)

WILLIAM G. WALLACE, INC.
REGISTERED PROFESSIONAL ENGINEERS, ARCHITECTS AND PLANNERS & SURVEYORS
2141 VERBENA DRIVE, SUITE 111, IRVINE, CALIFORNIA 92714

FIELD	M. BROWN	JOB NO.	85-186
OFFICE	R.R.	DATE	FEB. 1986

DRAWING NUMBER

DRAWING NUMBER

DRAWING NUMBER